
Elements for Residence & Garden

Structures and Columns Folio



FINEHOUSE, Ltd.™

www.FineHouse.net

Elements for Residence & Garden

Garden Structures & Architectural Trelliswork

Inspired by the past, by architects new and old, by gardens & country houses, FINEHOUSE creates garden structures, and architectural trelliswork of refined beauty and enduring quality. We craft our garden structures using sustainable wood species, long lasting metals, and our proprietary low maintenance SynCore™. Structures from FINEHOUSE are delivered to the site as modular, pre-crafted kits with all of the necessary hardware, flashings, sealants and accessories for a complete *Quality Assured* installation.



Pergola with Trelliswork

At FINEHOUSE we design and pre-fabricate garden structures that allow you to create spectacular outdoor living spaces. We offer you a range of building types including The Summerhouse with columns and roof. The GARDENHOUSE with walls, windows and doors. You can create an outdoor room or outdoor kitchen using one of our classic pergolas or arbours. You can have a structure with classic features or perhaps an Arts & Crafts or Southwestern influence. You determine which structure and style you want and FINEHOUSE will craft a modular structure that will last a lifetime, looking beautiful everyday along the way.



Pergola with Barrel Vault



Outdoor Room



Pavilion

Elements for Residence & Garden



Sustainable Wood, Composites & SynCore™



Wood Lintel

Sustainable Wood

Select Sustainable Wood when you require the most cost-effective structure that is also earth-friendly or "Green". Knots are allowed and some checking & twisting with age will occur. A range of species are available in different grades. All of our wood elements are to be finished with a wood tone or solid colour stain.



Composite Column

Composites

Composite materials are used for columns, siding, windows and doors. These long lasting materials are both "Green" and cost effective. All of our composites materials are able to be finished with a high quality house paint. Some factory finishes are available, inquire with regard to your specific project.



SynCore™ Rafter

SynCore™

Select SynCore when you desire a low maintenance, light coloured structure. SynCore has all of the detail and quality you only expect to see in an architectural wood product. SynCore is delivered with a flat white primer, you apply one coat of high quality house paint and your done. The SynCore's enduring quality and good looks remain with little or no care for many years.

Elements for Residence & Garden

Pergola

Freestanding or Attached



The pergola is a classic garden structure suitable for every style of home or garden. The pergola may be attached to another structure or freestanding. With a selection of columns, and different sizes and layouts of lintels, rafters and purlins to work with, the design possibilities are extensive. Accessories, details and material selection will allow you to further refine the design of your structure.



With Trelliswork, Crown & Dentil

A pergola with a "Coffered Trellis" ceiling, optional dentil and crown mouldings and, of course, columns, various layouts, scale and proportion to work with, the opportunity to have a distinctive structure that fits your site "perfectly" is at hand.



Pergolas with Whimsy

The line between pergola & pavilion often blur at FineHouse. We are often challenged to help create structures that are whimsical, fanciful, eclectic. We welcome these enquiries and commissions.

Elements for Residence & Garden

Pergola the Details

Columns with their capitals and bases bring an opportunity to define the character of the pergola. Whether you select a fluted column with attic base and Ionic capital for a classic appearance or square columns for a contemporary design, the column and its component parts, play a large role in the defining the character and overall style of the structure.



Scamozzi Capital & Fluted Column with Entasis



Lintel, Rafter & Purlins with Climbing Wisteria

Lintels, rafters and purlins with their carved ends are perhaps the most defining characteristic of the pergola. You may select a classic ogee or ovolo profile for a traditionally styled structure or square cut the ends on a Mission style structure. The size and spacing of the elements define how much shade is provided but also, how the overall design is perceived, in particular the scale and proportion of the structure.

Pergolas with entablature as seen here can have a wide variety of crown, dentil and other decorative mouldings applied. Classically influenced structures rely on this kind of ornament. Simpler more rustic structures can often benefit from a restrained use of ornament. Rough sawn brackets, corbels and trim allow you to refine the humble garden pergola



Crown and Dentil

Elements for Residence & Garden



GARDENHOUSE as a Potting Shed

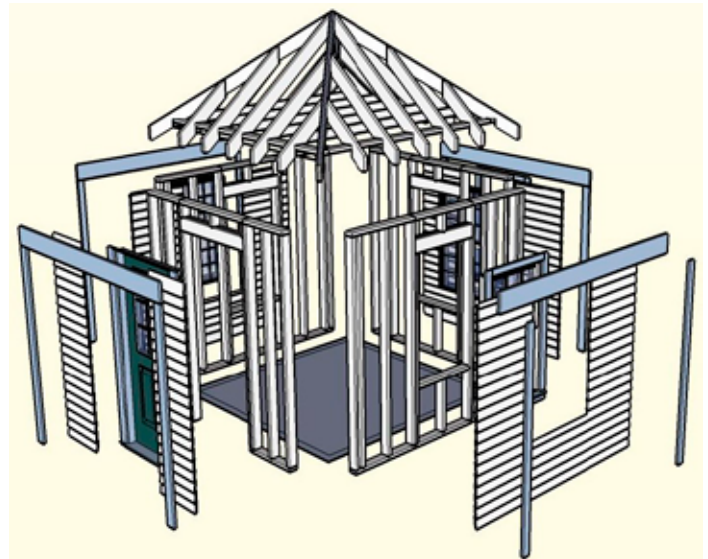
The GARDENHOUSE

The GARDENHOUSE is an architectural quality structure, built to the same standards as the finest residences. Whether you use the GARDENHOUSE for a studio, outdoor room or home office, you can be certain you will be adding value to the property

When you require a garden structure with details that are sympathetic with the existing architecture, such as shingles, siding and colours, please consider specifying the GARDENHOUSE.

The GARDENHOUSE is delivered as a panelized & pre-cut system of components. With full 1" thick, Syncore corner boards, frieze and trim, along with vented soffit, fascia and shingle moulding, the component parts of the GARDENHOUSE come together to create a special space.

The GARDENHOUSE comes in several shapes and sizes but our design-build program allows you to determine floor-plan, roof style and window/door placement. With all GARDENHOUSES the siding and roofing are specified by the owner



PLAYROOM

POOLHOUSE

OUTDOOR ROOM

GARDEN OFFICE

STUDIO

SLEEPING PORCH

Elements for Residence & Garden



The SummerHouse

The SummerHouse is a classic garden structure with columns and architectural roof system but open on 4 sides. The refined details make the difference in this structure. The columns are beautiful and have a lifetime warranty, the roof and ceiling system are built just as a fine home would be, with fascia, soffit and mouldings. The SummerHouse with shingles and paint selected by the owner, can reflect the character of the surrounding architecture adding value to your property.

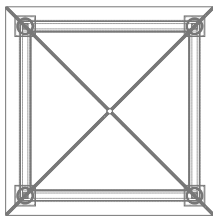
PAVILION

OUTDOOR
KITCHEN

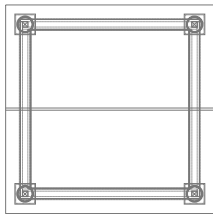
PATIO CANOPY

DECK AMENDMENT

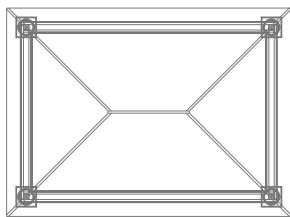
SHADE STRUCTURE



Pyramidal Hipped Roof



Roof with Continuous Ridge & 2 Gables



Hip Roof with a Central Ridge Line

Roof Styles

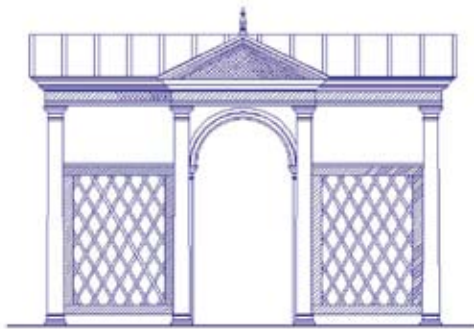
Roof styles are available in gable, hip, pyramidal and combinations of the these. See the Summerhouse at the right with pedimented portico.



Elements for Residence & Garden

Arbour

From the orient to Renaissance Italy and Baroque France the Arbour has played an important role in the garden. At FINEHOUSE we provide the component parts so that you may create your own special place draped in vines and surrounded by plants. Select the pediment, lintel, column and other components you require to achieve your design objectives.



Elevation

An Arbour of refined beauty with pedimented entry and flanking aisles. The Gothic screens, arched spandrel and finial further complement the design.



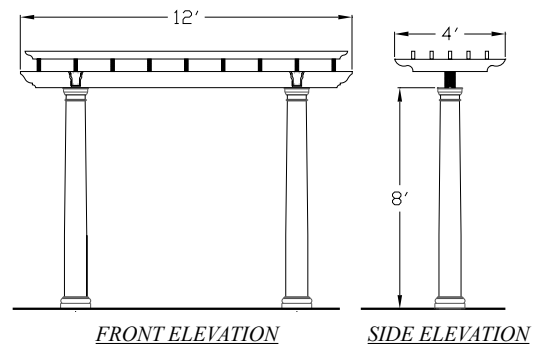
The Arbour may be as simple as 2 arches and 4 columns or as complex as the example to the left. See our design guide for a complete selection of columns, lintels, arches, pediments and other components for creating your Arbour.

Colonnade

A colonnade is a classical architectural form, and consists of a row of columns, sometimes joined horizontally by a lintel assembly. In some instances the lintels may have decorative rafters and purlins arrayed above, to add further interest or as a trellis for plant material. By grouping colonnades to surround a courtyard for example, you create the classic peristyle, an outdoor room from ancient Rome!

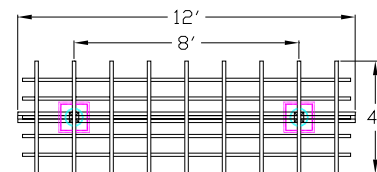


Colonnade with Tuscan columns, Cedar rafters & purlins



FRONT ELEVATION

SIDE ELEVATION



PLAN

Elements for Residence & Garden

Trelliswork

Trelliswork in French is treillage. Treillage refers to trellis of a highly developed form, both artistically and architecturally. The Dutch and French achieved a high level of refinement in the 17th century creating arbors, galleries, and summerhouses with a keen eye for proportion and decoration. Today at FINEHOUSE you can obtain the component parts you need to create your own trellis structure of exquisite beauty.

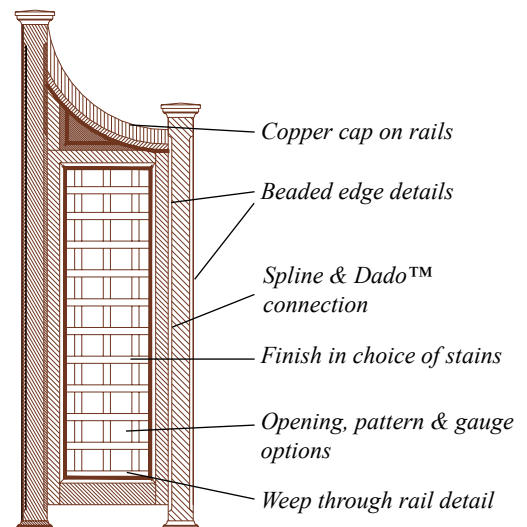


Architectural trellis, in sustainable wood and SynCore™ are available from FineHouse. We supply a complete prefabricated system of trellis, trim, columns, posts and decoration to complete your design

Trellis Screens are the pierced walls of classic architectural origin. At FINEHOUSE we have created the finest selection of Trellis Screens available. We offer an unsurpassed choice of sizes, gauges and patterns. With trelliswork from FineHouse, you have a palette of options to choose from in creating your design. You can determine the density of the trellis, the pattern, decide if you want circular or oval windows and the list goes on. Please see our design guide for a more complete selection of options.



Lintel, Rafter & Purlin above Copper flashed Capital

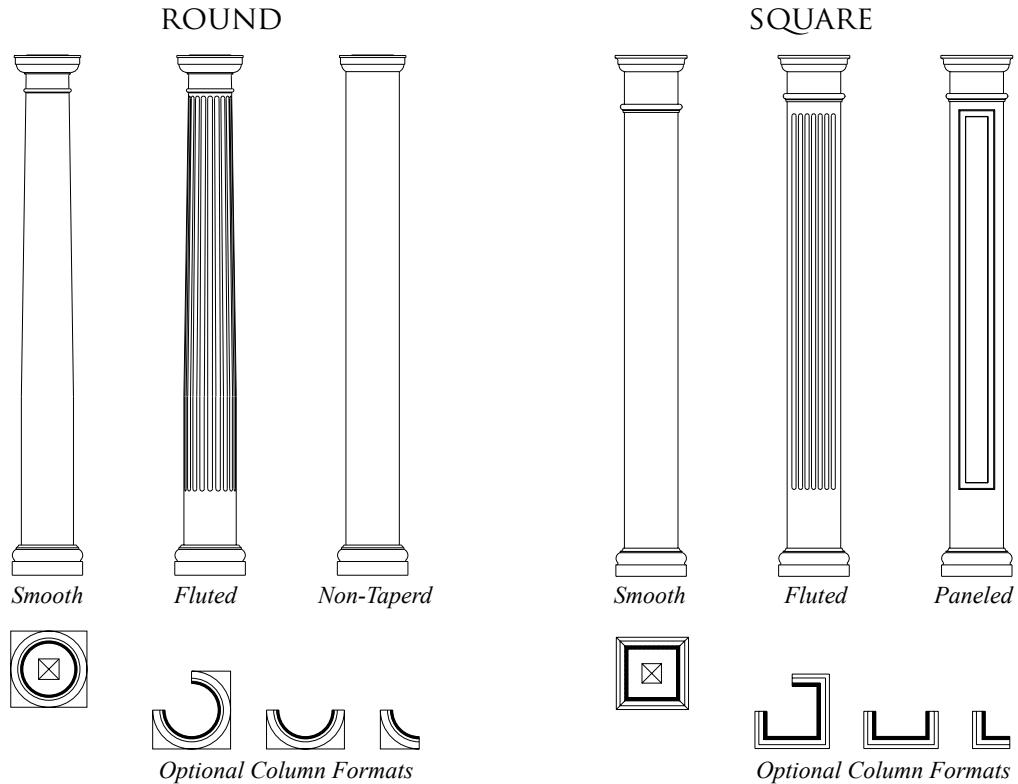


Seen above is an arched buttress trellis panel, typically this is used to make the transition from one height of trellis to another (4' to 6' for example). The arched buttress may also be used as a flanking element on each side of a gate or entry. To further decorate your Trelliswork you may choose from a selection of arches, festoons and transoms. With these decorative components you can design trelliswork to fit the most complex or simple requirements.

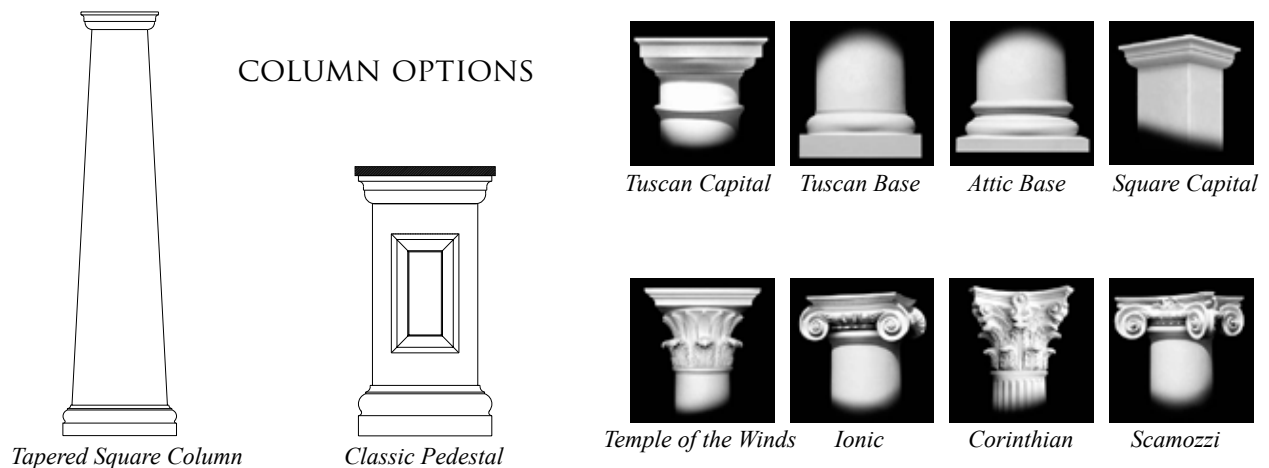
Elements for Residence & Garden

Architectural Columns

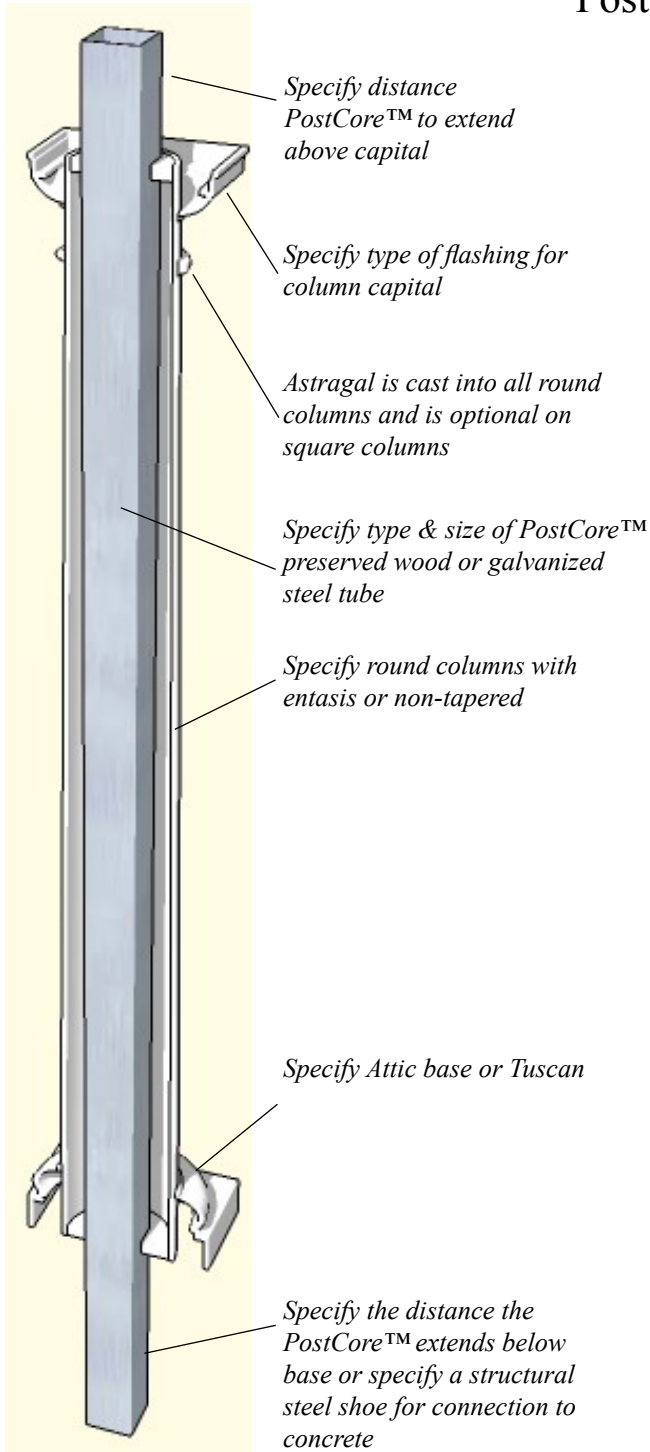
Architectural composite columns from FineHouse are fashioned after classical Greek and Roman designs. Our columns are a basic building component for homes, buildings and structures of all types, and are guaranteed for life in outdoor use. We offer the largest range of options in the industry, including our proprietary PostCore™ which greatly simplifies installation and assures structural integrity. Columns from FineHouse ~ Strong, Beautiful, and Enduring.



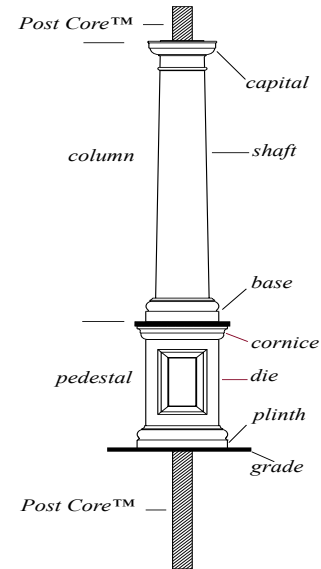
Architectural columns are available in round, square and tapered square formats. Round columns typically have a classical entasis or a "taper", however round columns are available without entasis. Columns are available in a wide range of styles and sizes with a selection of decorative capitals and bases providing you with a grand palette of options for your designs.



Architectural Columns with PostCore™



FineHouse has developed a innovative system for installing architectural columns using an integral PostCore™. We deliver our composite columns with an integral structural post a "core" if you will. This PostCore is made of either preserved wood or a galvanized steel tube and it extends from the top of the column down thru the column and out the bottom.



With this unique approach to column design the architectural columns can be structurally fastened at the top with ease and also at the bottom either with a structural steel "shoe" or allowed to extend below grade into a pier footing for years of structural integrity. With structural PostCore™, column installation is simplified and structural integrity is assured.

Elements for Residence & Garden



Trellage by FINEHOUSE may be the most beautiful investment you ever make, though the cost not so intimidating. We offer you a refined building system of impeccable quality and exceptional value. Each project is individually crafted based on your requirements and our modular building system. We welcome special commissions, please enquire.

FINEHOUSE,Ltd *Elements for Residence & Garden*

1514 Mt Hebron Rd., Strasburg, Virginia 22657 (540) 436-8080 Fax (540) 436-8335
www.finehouse.net E-mail trellis@finehouse.net